



Physical Sciences Inc.

20 New England Business Center
Andover, Massachusetts 01810

Tel: (978) 689-0003

Fax: (978) 689-3232

www.psicorp.com

PSI SideView™ Blue LED Illuminator

Features

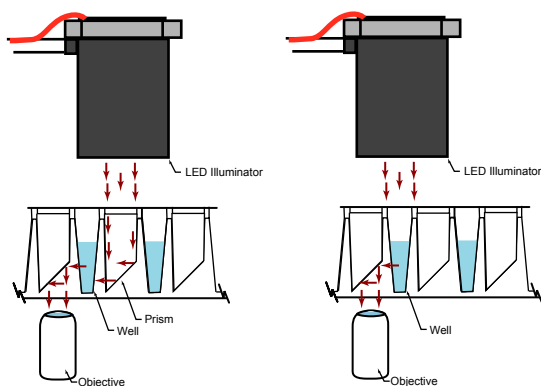
- 470 nm blue LED
 - Collimated beam
 - Uniform intensity
 - 4 cm spot size 5 cm from lens
 - 5 VDC, 750 mA universal wall plug
 - 450-490 nm bandpass filter
- Mounted on a 6"L, 0.5"D support post

Potential Applications

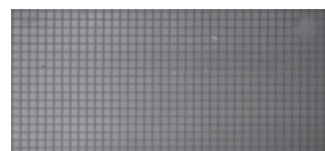
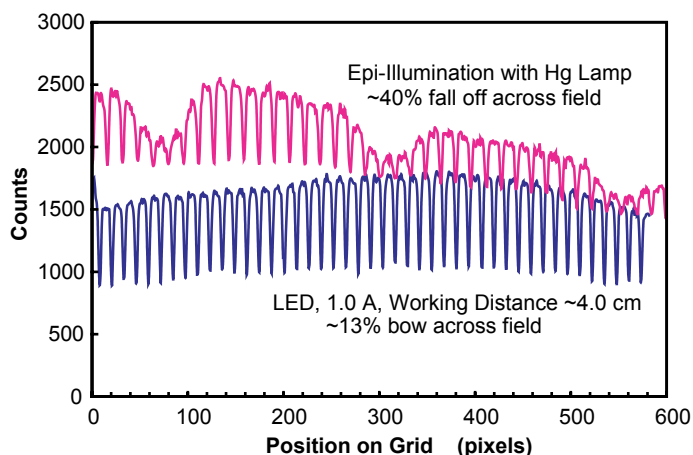
- Top illumination for fluorescence excitation
 - Reduce light avoidance response
 - Compatible with standard GFP or FITC filter set

Brightfield illumination

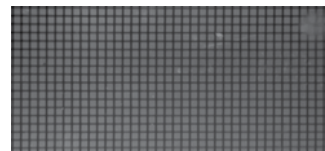
- Position source for optimum brightfield imaging of samples in SideView microplates



<http://www.sideviewmicroplate.com>



Epi-illumination



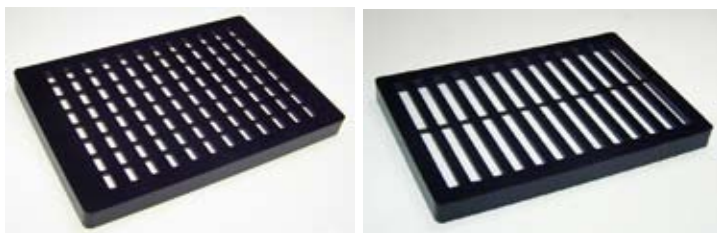
Top-illumination

Specifications

LED power (max)	3 W
Beam divergence	10°
Beam diameter at 5 cm	4 cm
Light intensity at beam center; 5 cm distance	100 mW/cm ²

Compatible Accessories

- SideView Blue Top Illumination Source
 - Fluorescence Excitation
 - Brightfield
- SideView Masks
 - Background reduction



SideView Masks



SideView Blue Top Illumination Source

Please inquire about your specific application.

For further information, contact: **Dr. Anthony Ferrante**
 Physical Sciences Inc., 20 New England Business Center, Andover, MA 01810
 Phone: (978) 689-0003 Fax: (978) 689-3232 e-mail: support@sideviewmicroplate.com
<http://www.sideviewmicroplate.com>